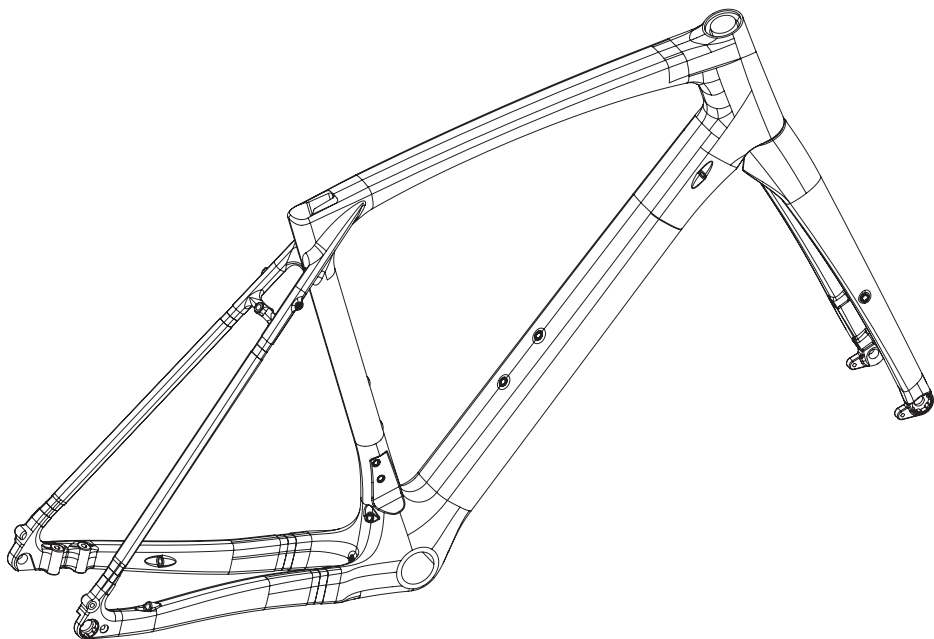


# SERVICE MANUAL ROCK MACHINE PD-FK-15



# SERVICE MANUAL ROCK MACHINE

Rock Machine would like to congratulate you on the purchase of your new product. We place great emphasis on the choice of materials and their processing so as to ensure the highest quality of our products, a long service life and great functionality. Our name is a symbol of a captivating design, concept and appearance.

To enjoy unlimited riding pleasure with your high-quality Rock Machine product for many years to come, it is necessary to observe certain rules defined and specified in the Service Manual. You have received the Operating Manual with your bike.

Rock Machine supplies high-quality bicycles exclusively for specialized shops. These products are already partially pre-assembled.

The final assembly of the bike can only be carried out by an authorized Rock Machine dealer. This particularly applies to the basic configuration of suspension components, the front and back derailleurs and braking systems. This will ensure maximum safety when using the product.



## WARNING

### WARNINGS RELATED TO MECHANICAL WORK

Specialized skills and tools are required to configure and tune the bike. These tasks should only be carried out by employees at an authorized service station. Riding a bike that has not been correctly configured and assembled can be dangerous. Even a seemingly minor deficiency, such as a loose screw, can cause a crucial part to break over time and the loss of control of the bike, leading to an accident. Therefore, we recommend that you leave any repairs and maintenance for your bicycle to an authorized service centre. Your safety depends on the correct maintenance of the bike. Employees of authorized service stations have special qualifications and know-how.



## WARNING

Any adjustments and modifications can lead to the frame, fork or other parts becoming unsafe. The use of an unapproved component or the incorrect assembly of parts can lead to excessive wear and tear of the bike or its parts. Adjustments to the frame, fork or other components can have a negative impact on the handling of the bike and may lead to a fall. Do not grind off, drill or file any parts; do not remove backup safety elements, do not install incompatible forks and do not make any other similar unauthorized changes. Before you install any accessories on your bicycle, or replace any part, always consult the service centre staff to make sure the particular accessory or part is compatible and safe to use.

# BIKE CATEGORY

## Gravelride CRB

The bike is constructed for riding in type-2 conditions.

### Type-2 operating conditions

Riding on- and off-road, with jumps of up to 15 cm (6 in).  
Riding over uneven terrain when the tyres may lose contact with the surface for a short time. Jumps and drops of at most 15 cm (6 in).



# PREVENTING DAMAGE

If you are transporting the bike in a box, make sure that the bike is kept safe, for instance by using a soft foam cover. Make sure that there are no foreign items or that excessive pressure or force from these items cannot damage the frame. Please keep in mind that the warranty does not apply to damage caused during transit.

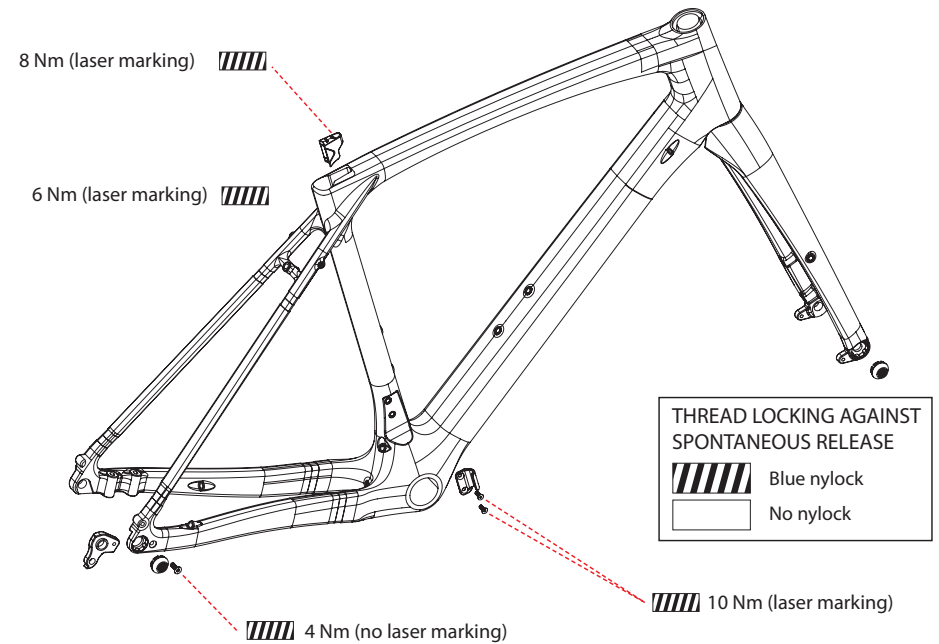
# SERVICE INTERVALS

- Large-scale service – at a service centre, 1× per year or after 200 hours of riding.
- Check the tightening of moving parts before and after each ride. The prescribed torques of individual joints (see the diagram below) must be strictly observed.
- Bearings and pivots should be lubricated 1× per half a year.
- Consult your dealer about the exact service plan and maintenance schedule of your bicycle. The dealer shall propose the schedule depending on the model of your bicycle and the way you use it. The service intervals stated above are the recommended maximum intervals for regular bicycle maintenance, i.e. they cannot be extended under any circumstance. If you ride your bicycle more intensively, or if your dealer advises you to, we recommend that you shorten the intervals and extend the scope of tasks carried out. For example, if you ride your bicycle in adverse climatic conditions, over hard terrain or if you have equipped your bicycle with specific components with a different service interval and scope of regular maintenance stated by their manufacturer (exact instructions regarding the service of particular components will be provided by your dealer).



WARNING

The warranty may be voided if the service intervals and prescribed torques are not adhered to.



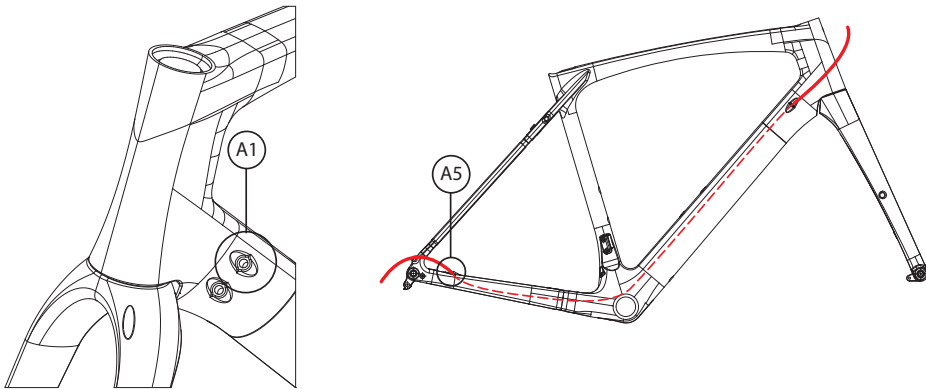
# SERVICE

## REPLACING THE CABLES AND HOSES

Ducts are made using guiding tunnels inside of the bicycle frame. The ducts allow easy and quick replacement of cables and hoses within their full length without need to break them.

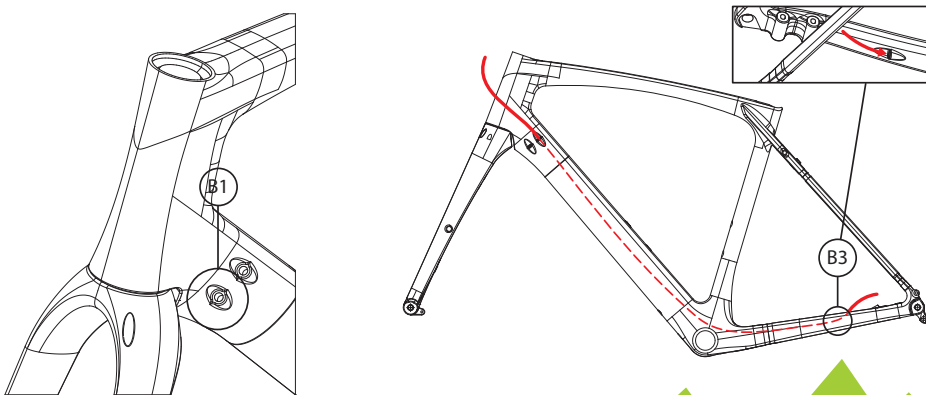
### 1 REPLACING THE REAR DERAILLEUR CABLE

- 1.1 Slide the old cable out from the guide in the frame.
- 1.2 Slide a new cable in the frame through the hole **A1** and pull it out through the hole **A2**.



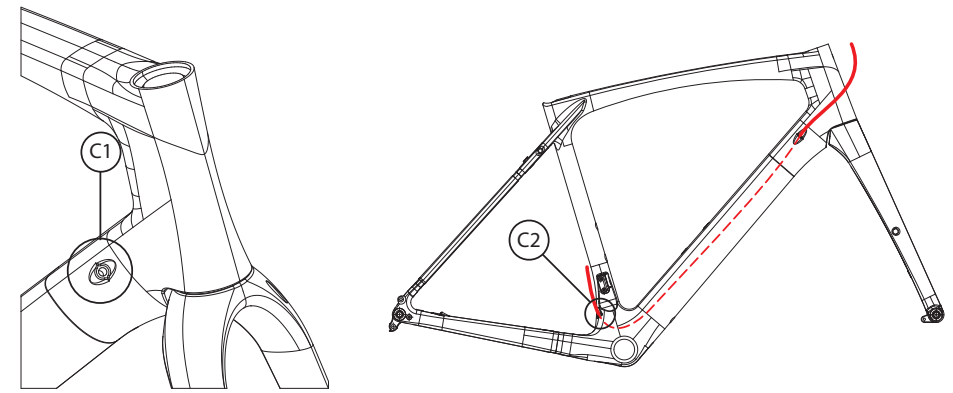
### 2 REPLACING THE HYDRAULIC HOSE OF THE REAR BRAKE

- 2.1 Slide the old hose out from the guide in the frame.
- 2.2 Slide a new hose in the frame through the hole **B1** and pull it out through the hole **B2**.



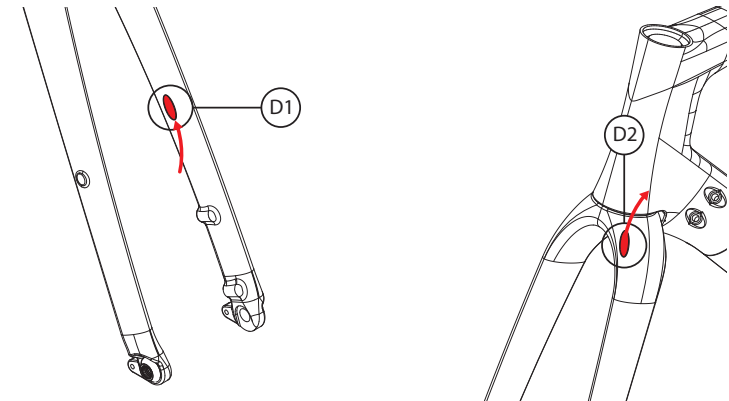
### 3 REPLACING THE DERAILLEUR CABLE

- 3.1 Slide the old cable out from the guide in the frame.
- 3.2 Slide a new cable in the frame through the hole **C1** and pull it out through the hole **C2**.



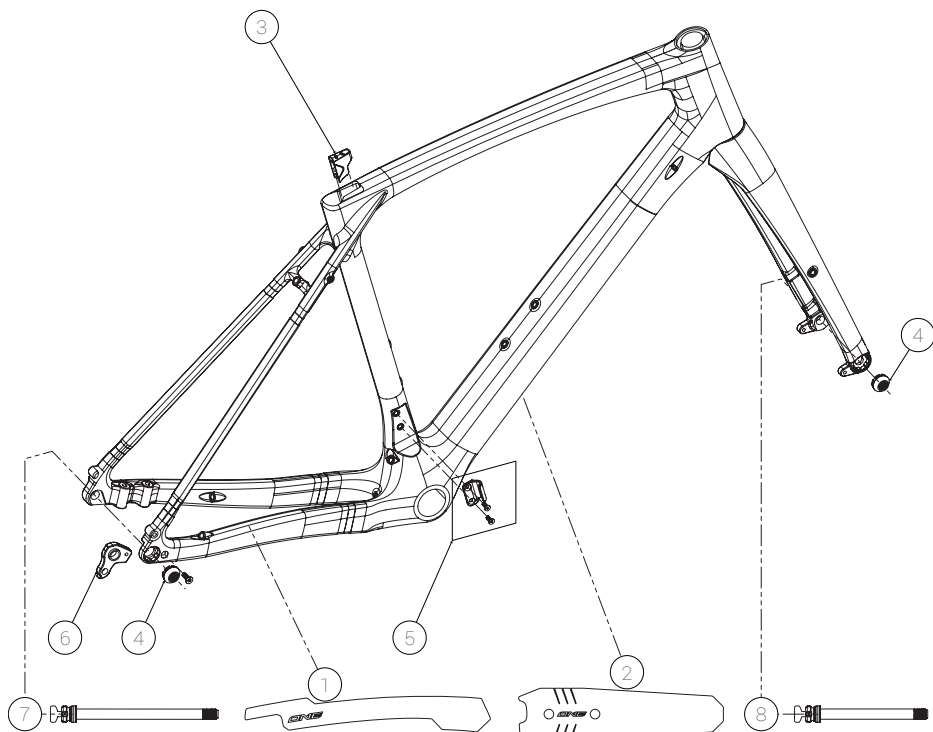
### 4 REPLACING THE HYDRAULIC HOSE OF THE FRONT BRAKE

- 4.1 Slide the old hose out from the guide in the frame.
- 4.2 Slide a new hose in the frame through the hole **D1** and pull it out through the hole **D2**.



## COMPATIBILITY

Brake Rotors	Front	Ø 140 - 160 mm
	Rear	Ø 140 - 160 mm
Tyre		max. 700 x 50C
Chainring		max. number of teeth 42
Headset		Orbit C-40 NO.42 Sealed
Bottom Bracket		Euro BB 68 mm
Seatpost Clamp		Integrated
Seatpost	Ø 27,2 mm	min. insertion 100 mm
Rear Thru-Axle		12 x 142 mm



ORIGINAL ACCESSORIES		
ART. NO.	DESCRIPTION	BFI PRODUCT CODE
1	CHAIN STAY STICKER PROTECTOR	087.8000.00023-196
2	DOWN TUBE STICKER PROTECTOR	087.4000.00002-196
3	SEATPOST INTEGRATED FRAME LOCK	013.0018.00002-398
4	FRAME AND FORK DROPOUT THREADED NUT	013.0002.00151-398
5	SRAM/SHIMANO FRONT DERAILLEUR BRAZED-ON HOLDER	013.0017.00019-398
6	SRAM/SHIMANO REAR DERAILLEUR REPLACABLE HANGER	013.0002.00143-398
7	REAR THRU-AXLE	059.0008.00041-196
8	FRONT THRU-AXLE	059.0008.00040-196



#### SMART TIPS

To improve handling and comfort and to prevent defects, we recommend installing a tubeless system.

#INTRAILWETRUST

Rock Machine is a registered trade mark of  
BIKE FUN International

---

Areál Tatry 1445/2  
742 21 Kopřivnice

---

[www.superiorbikes.eu](http://www.superiorbikes.eu)